



Luminaire

Mila-S

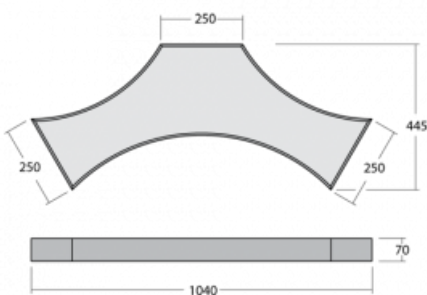
101S-200K-10GHE/840, W



One model, thousands of combinations. The Mila-S luminaire, designed by the world's leading designer Rob Van Beek, is innovative in every aspect. Thanks to a unique magnetic system, you can connect the luminaires to create spatial structures of various shapes without the need for tools. However, none of this would be possible without the latest LED technology, which is hidden inside the aluminium profiles in white, black or silver. In addition, the hidden light source does not create any undesirable shadows. Thanks to the possibility of dimming, the luminaire is suitable for showrooms, offices and various representative spaces. Even the name of this lighting system is perfectly thought through – Mila means “a thousand” in Italian.

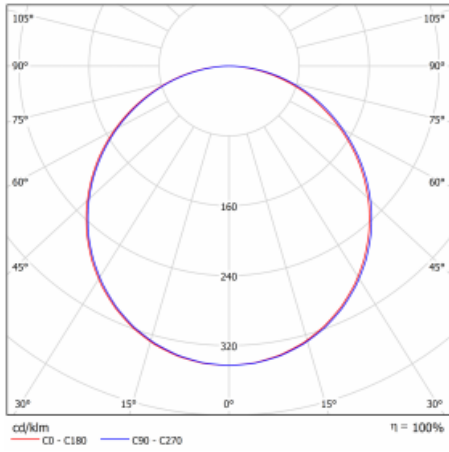
Design Rob van Beek

Technical drawing



| | |
|--|--|
| Type of installation | Surface, Wall mounted, Suspended |
| Light distribution | Direct |
| Luminaire shape | Other shape |
| Colour of the luminaires | White |
| Material | Aluminium |
| Lifetime | L80/B20 50 000 hours |
| Warranty | 5 years |
| Description of luminaires | Luminaire surface/wall mounted/suspended |
| Dimensions | 1040 mm × 445 mm × 70 mm |
| Weight | 7.4 kg |
| Light source | LED MODUL |
| Type of optical system | Opal diffuser |
| Luminous flux* | 4910 lm |
| Colour Temperature | 4000 K cool white |
| Luminous efficacy | 103 lm/W |
| MacAdam Light source | 3 |
| Colour rendering index | 80 |
| UGR max. X=4H Y=8H, $\rho=70,50,20$ | 21.5 |

Curve



Luminaire power input* 47.5 W

Connection of the luminaires ON/OFF

Electrical voltage 220-240V

Frequency 50/60Hz

⊕ CE IP 20

*±10 %

Downloads

Installation instructions



Photos



Accessories

00-00300, N
wire suspension
2000mm



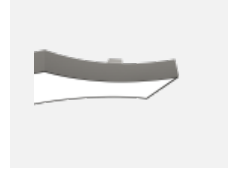
00-00301, N
wire suspension
4000mm



00-00302, N
wire suspension
6000mm



00-00370, W
ceiling cup 80x80x32mm



101-0001, W
accessory for creating of
distance between
mounting surface



101-0011
cable 3x 0,75 mm with
WAGO connector



101-0013, W
transparent cable 3x
0,75 mm, 2m with WAGO
connector



101-0015, W
transparent cable 3x
0,75 mm, 6m with WAGO
connector