



## Luminaire

# Mila-S

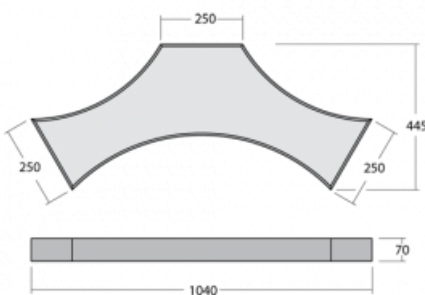
101S-200K-10GHD/830, W



One model, thousands of combinations. The Mila-S luminaire, designed by the world's leading designer Rob Van Beek, is innovative in every aspect. Thanks to a unique magnetic system, you can connect the luminaires to create spatial structures of various shapes without the need for tools. However, none of this would be possible without the latest LED technology, which is hidden inside the aluminium profiles in white, black or silver. In addition, the hidden light source does not create any undesirable shadows. Thanks to the possibility of dimming, the luminaire is suitable for showrooms, offices and various representative spaces. Even the name of this lighting system is perfectly thought through – Mila means “a thousand” in Italian.

Design Rob van Beek

## Technical drawing



Type of installation	Surface, Wall mounted, Suspended
Light distribution	Direct
Luminaire shape	Other shape
Colour of the luminaires	White
Material	Aluminium
Lifetime	L80/B20 50 000 hours
Warranty	60 months
Description of luminaires	Luminaire surface/wall mounted/suspended
Dimensions	1040 mm × 445 mm × 70 mm
Weight	7.8 kg
Light source	LED MODUL
Type of optical system	Opal diffuser
Luminous flux	4670 lm ± 10 %
Colour Temperature	3000 K warm white
Luminous efficacy	98 lm/W
MacAdam Light source	3
Colour rendering index	80
UGR max. X=4H Y=8H, $\rho=70,50,20$	21.3

## Curve



Luminaire power input 47.5 W  $\pm$  10 %

Connection of the luminaires DALI dimmable

Electrical voltage 220-240V

Frequency 50/60Hz

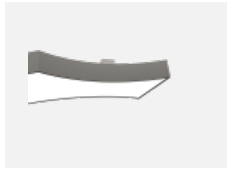
⊕ CE IP 20

## Downloads

[Installation instructions](#)[Photos](#)

**Accessories**


**00-00370, W**  
ceiling cup 80x80x32mm



**101-0001, W**  
accessory for creating of  
distance between  
mounting surface



**101-0002, N**  
wire suspension 2000  
mm, 2 wires



**101-0007, N**  
wire suspension 4000  
mm, 2 wires



**101-0008, N**  
wire suspension 6000  
mm, 2 wires



**101-0012**  
cable 5x 0,75 mm with  
WAGO connector



**101-0014, W**  
transparent cable 5x  
0,75 mm, 2m with WAGO  
connector



**101-0016, W**  
transparent cable 5x  
0,75 mm, 6m with WAGO  
connector