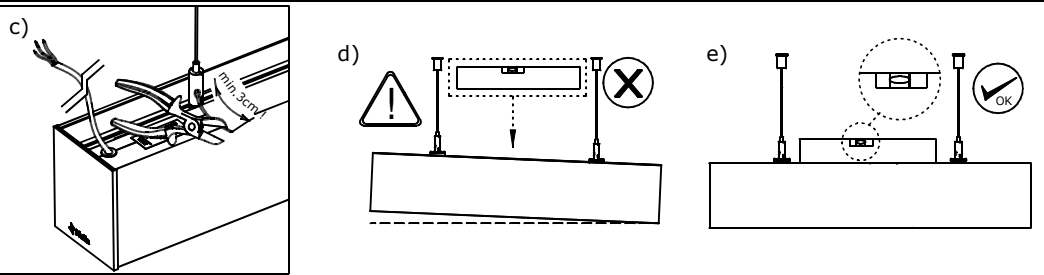
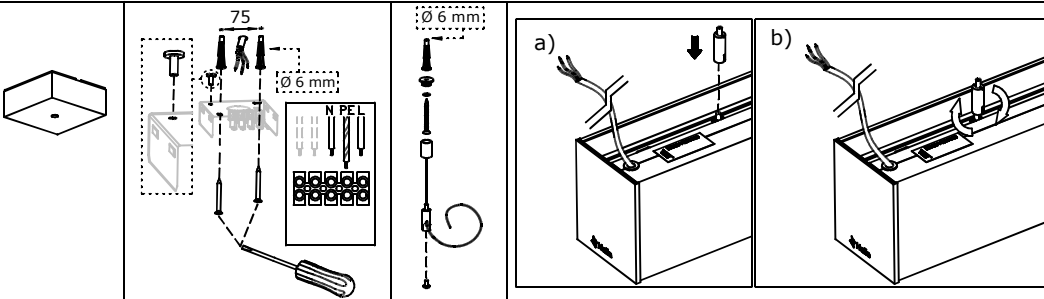
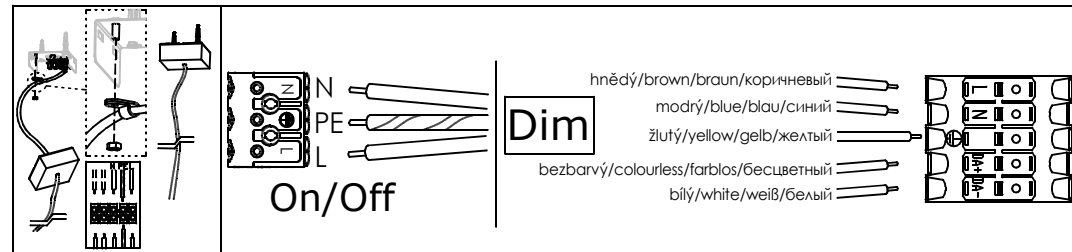
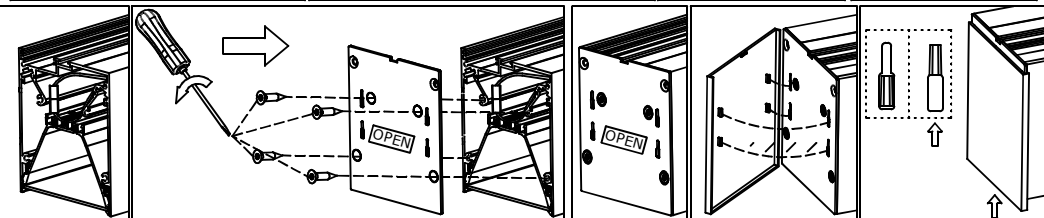
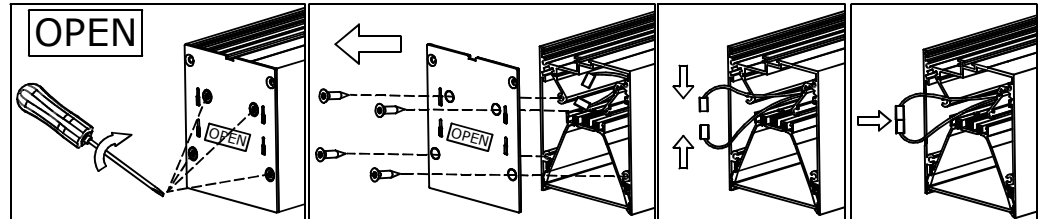


| | |
|--------------------------|------------|
| 05-200(500)/11-501*-10G* | L = 561mm |
| 05-200(500)/11-501*-15G* | L = 842mm |
| 05-200(500)/11-501*-20G* | L = 1122mm |
| 05-200(500)/11-501*-25G* | L = 1403mm |
| 05-200(500)/11-501*-30G* | L = 1683mm |
| 05-200(500)/11-501*-35G* | L = 1964mm |
| 05-200(500)/11-501*-40G* | L = 2244mm |
| 05-200(500)/11-501*-60G* | L = 3366mm |
| 05-200(500)/11-501*-80G* | L = 4488mm |

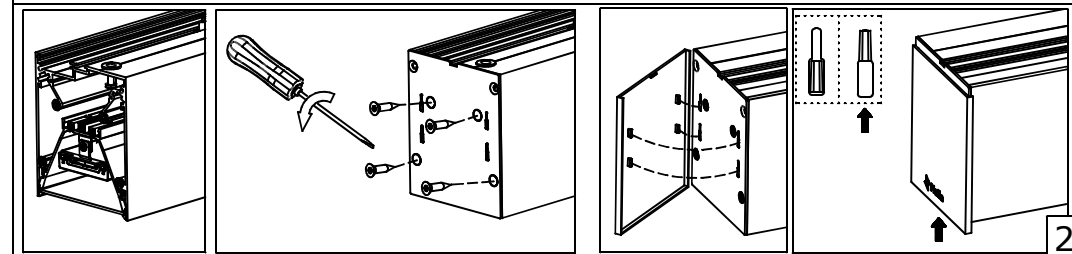
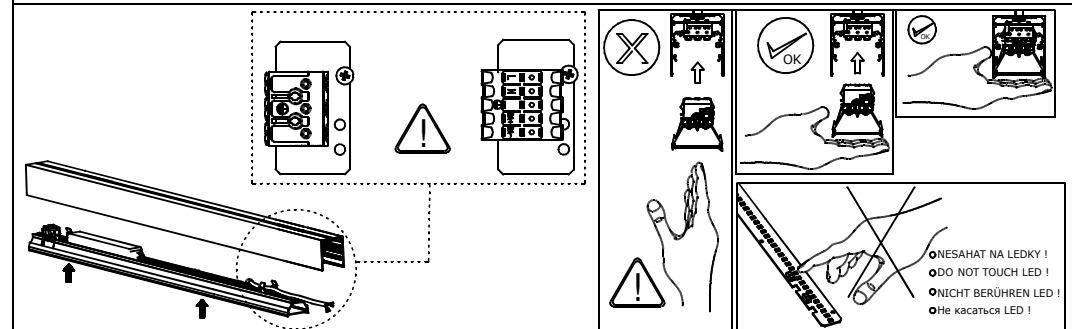
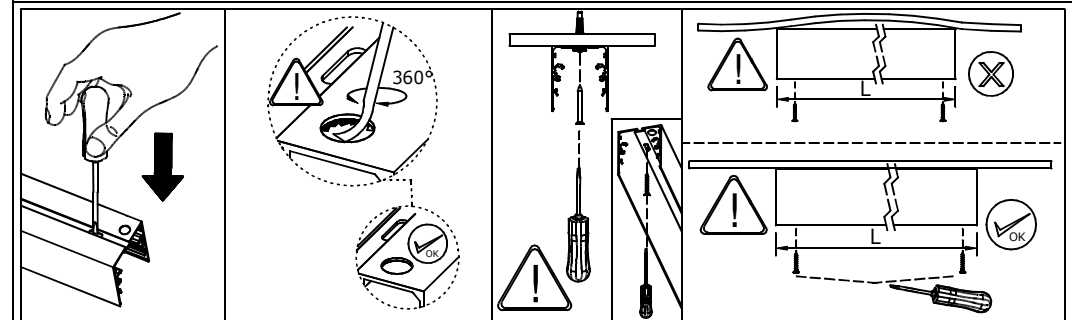
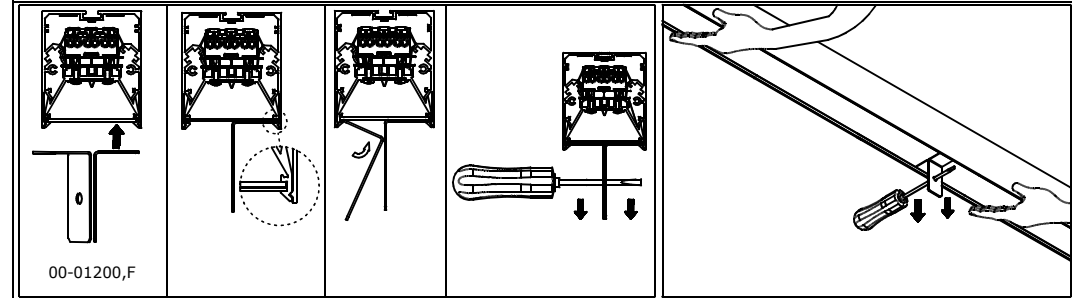
05-500*-*G** / 11-501*-*G**

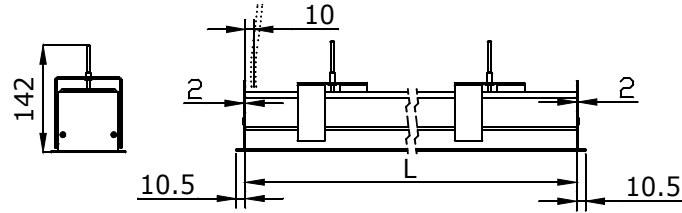
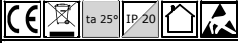


05-200*(500)*-*G*M(M3) / 11-501*-*G*M(M3)

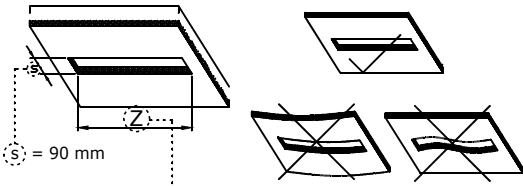


05-200*-*G**

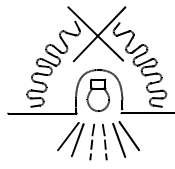




| | |
|--------------|------------|
| 05-000*-10G* | L = 561mm |
| 05-000*-15G* | L = 842mm |
| 05-000*-20G* | L = 1122mm |
| 05-000*-25G* | L = 1403mm |
| 05-000*-30G* | L = 1683mm |
| 05-000*-35G* | L = 1964mm |
| 05-000*-40G* | L = 2244mm |
| 05-000*-60G* | L = 3366mm |
| 05-000*-80G* | L = 4488mm |



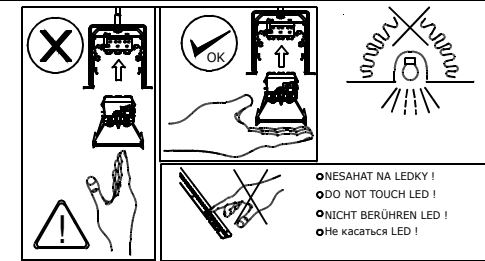
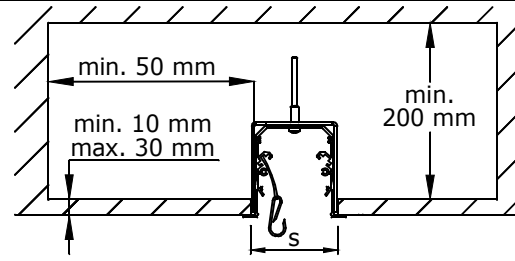
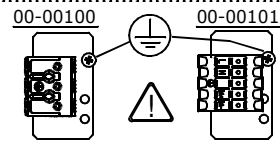
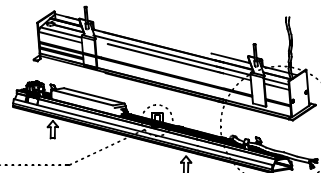
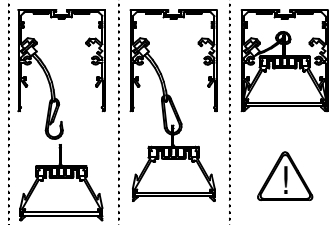
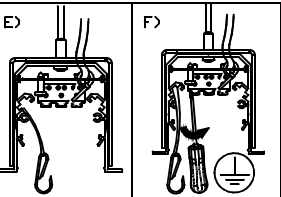
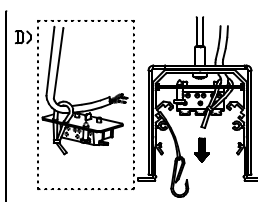
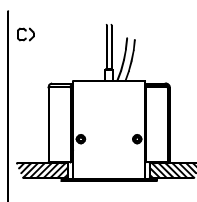
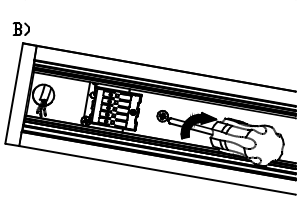
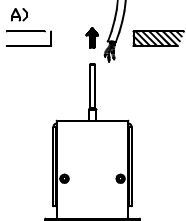
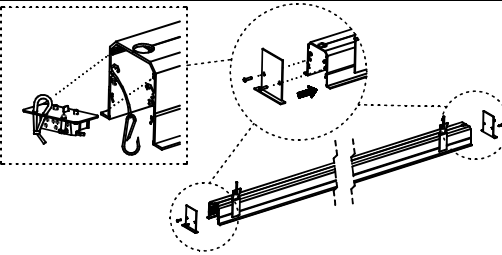
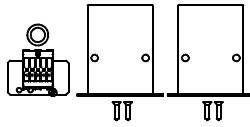
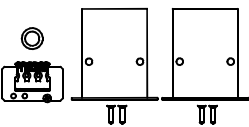
$Z = L + 2 * 3 \text{ mm}$



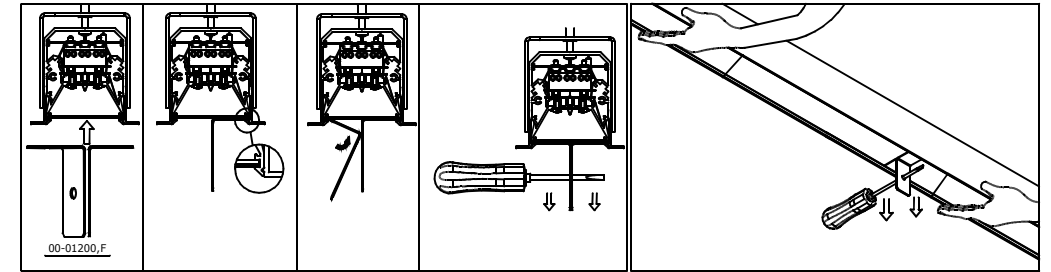
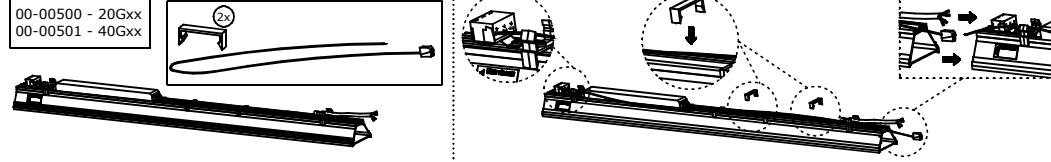
- Nepřekrývat svítidlo izolačním materiálem !
- Luminaire must not be covered with insulating material !
- Die Leuchte nicht mit Isoliermaterial überdecken !
- Не перекрывать светильник изоляционным материалом !

00-00100

00-00101



00-00500 - 20Gxx
00-00501 - 40Gxx



- Světelný zdroj v tomto svítidle smí vyměnit pouze výrobce nebo jeho smluvní servisní technik nebo podobně kvalifikovaná osoba!
- The light source in this luminaire may be replaced only by the manufacturer or its contractual service technician or a similarly qualified person!
- Die Lichtquelle dieser Leuchte darf nur vom Hersteller oder einem von ihm beauftragten Servicetechniker oder einer vergleichbar qualifizierten Person ersetzt werden.
- Источник света данного светильника может быть заменен только производителем, уполномоченным им сервисным техником или специалистом с соответствующей квалификацией
- Montáž smí provádět pouze pracovník s odbornou elektrotechnickou kvalifikací. Před prováděním jakékoliv údržby vypněte přívod el. proudu.
- The installation may only be carried by authorised specialist. Always switch-off the power supply before carrying out any maintenance.
- Die Leuchtenmontage kann nur von autorisiertem Fachpersonal durchgeführt werden. Vor der beliebigen Wartungsausführung die Einspeisung abschalten.
- Установка светильников разрешена только квалифицированным электромонтером.
- Výrobce nenesé odpovědnost za nesprávné zacházení s produkty.
- The manufacturer is not responsible for the incorrect use and assembly of its products.
- Der Hersteller trägt keine Verantwortung für eine falsche Verwendung des Produktes.
- Производитель не несет ответственности за неправильное обращение с продуктом.